

DTC
CAPITAL CITY
RAJARHAT

Site Address: DTC Capital City, Rajarhat Main Road, North 24 Parganas, Pin - 700135

Marketing Address: Mallik House, 3rd Floor, 7 Hare Street, Kolkata - 700001

Call on - 8972280432; Email - info@takeyourkeys.com

Disclaimer:

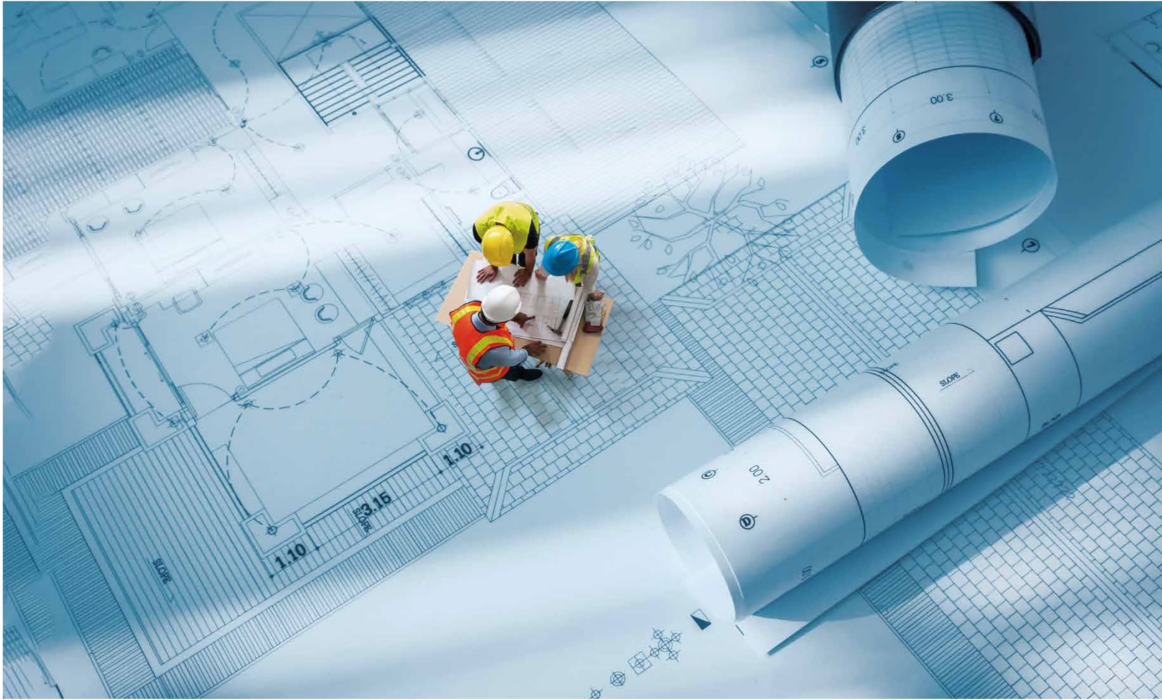
The images are architect's expressions and are for illustrative purposes only.

The furniture shown in the plan is for layout purposes only and not provided by the developer. Flat layout and dimensions will be as per sale agreement. Specification and master plan amenities are for indication and for representational only, final amenities and specification will be as per sale agreement.

LIVE LIFE WITH A

BIG

**COURSE OF
ACTION**



BIG

PLANS FOR
A GRAND LIFE

DTC Capital City has planned every detail of the project keeping in mind the promise of an expansive living. Every provision, facility and the inspiration behind every design all have been carefully thought to add magnanimity to life.

MASTER PLAN



1 CENTRAL LAWN



6 MOUNDS



2 PRIMARY WALKWAY



7 WATER FOUNTAIN SQUARE



3 THE ORCHARD



8 REFLEXOLOGY COURT



4 HERB GARDEN



5 STEPPING STONES



9 SIT OUT ZONE



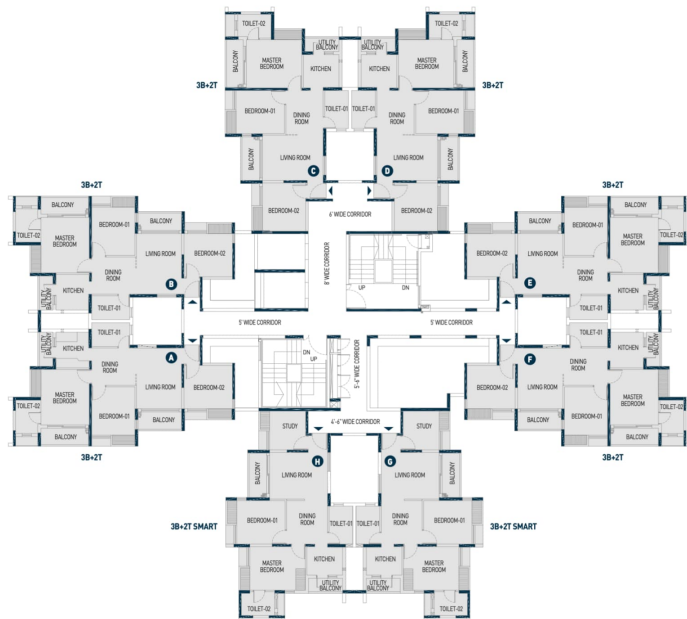
10 KIDS' PLAY AREA



FLOOR PLAN

TYPICAL TOWER - 1

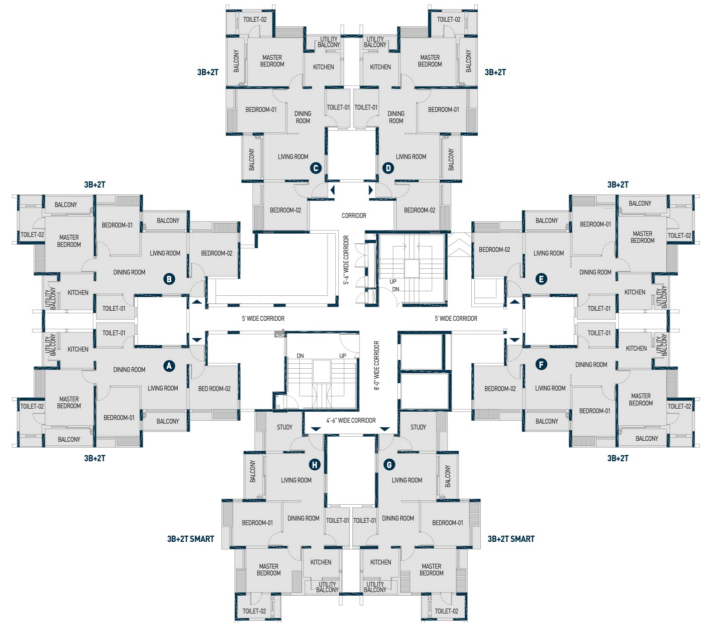
UNIT TYPE	SBUA	BUA	CARPET AREA	WARDROBE AREA	BALCONY AREA
A, B, C, D, E & F (3B+2T)	1150 sq.ft.	863 sq.ft.	648 sq.ft.	30 sq.ft.	94 sq.ft.
G & H (3B+2T SMART)	1030 sq.ft.	772 sq.ft.	607 sq.ft.	26 sq.ft.	58 sq.ft.



FLOOR PLAN

TYPICAL TOWER - 2 & 3

UNIT TYPE	SBUA	BUA	CARPET AREA	WARDROBE AREA	BALCONY AREA
A, B, C, D, E & F (3B+2T)	1150 sq.ft.	863 sq.ft.	648 sq.ft.	30 sq.ft.	94 sq.ft.
G & H (3B+2T SMART)	1030 sq.ft.	772 sq.ft.	607 sq.ft.	26 sq.ft.	58 sq.ft.



UNIT PLAN



TYPICAL 3 BHK

UNIT TYPE	SBUA	BUA	CARPET AREA	WARDROBE AREA	BALCONY AREA
A, B, C, D, E & F (3B+2T)	1150 sq.ft.	863 sq.ft.	648 sq.ft.	30 sq.ft.	94 sq.ft.



TYPICAL 3 BHK SMART

UNIT TYPE	SBUA	BUA	CARPET AREA	WARDROBE AREA	BALCONY AREA
G & H (3B SMART+2T)	1030 sq.ft.	772 sq.ft.	607 sq.ft.	26 sq.ft.	58 sq.ft.

FLOOR PLAN

TYPICAL TOWER - 4

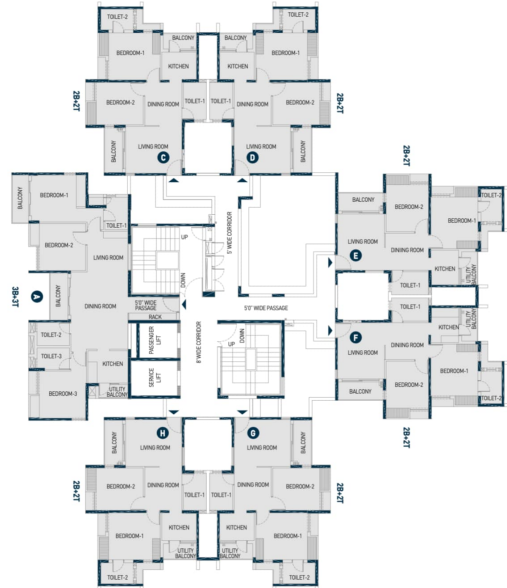
UNIT TYPE	SBUA	BUA	CARPET AREA	WARDROBE AREA	BALCONY AREA
A (3B-3T)	1430 sq.ft.	1075 sq.ft.	850 sq.ft.	32 sq.ft.	95 sq.ft.
C, D, E, F, G & H (2B+2T)	910 sq.ft.	685 sq.ft.	531 sq.ft.	20 sq.ft.	61 sq.ft.



FLOOR PLAN

TYPICAL TOWER - 5

UNIT TYPE	SBUA	BUA	CARPET AREA	WARDROBE AREA	BALCONY AREA
A [3B+3T]	1430 sq.ft.	1075 sq.ft.	850 sq.ft.	32 sq.ft.	95 sq.ft.
C, D, E, F, G & H [2B+2T]	910 sq.ft.	685 sq.ft.	531 sq.ft.	20 sq.ft.	61 sq.ft.



UNIT PLAN

TYPICAL 3 BHK LARGE

UNIT TYPE	SBUA	BUA	CARPET AREA	WARDROBE AREA	BALCONY AREA
A (3B+3T)	1430 sq.ft.	1075 sq.ft.	850 sq.ft.	32 sq.ft.	95 sq.ft.



UNIT PLAN

TYPICAL

2 BHK

UNIT TYPE	SBUA	BUA	CARPET AREA	WARDROBE AREA	BALCONY AREA
C, D, E, F, G & H (2B+2T)	910 sq.ft.	685 sq.ft.	531 sq.ft.	20 sq.ft.	61 sq.ft.





LEAP
BIG

FOR BETTER
LIVING

DTC Capital City is a big proponent
of sufficient and sustainable living
facilitated by its specifications.

SPECIFICATIONS

Superstructure

- Earthquake resistant R.C.C framed structure

External finish

- Weather proof exterior paints finish

Master Bedroom

- Flooring: Vitrified tiles
- Walls: Putty punning

Other Bedroom

- Flooring: Vitrified tiles
- Walls: Putty punning

Living/Dining Room

- Flooring: Vitrified tiles
- Walls: Putty punning

Kitchen

- Flooring: Anti-skid Vitrified tiles
- Dado: Dado of Vitrified tiles above kitchen counter up to 2 feet height.
- Walls: Putty punning
- Counter: Polished granite counter on R.C.C slab with kitchen sink and sink cock.

Toilet

- Flooring: Anti-skid Vitrified tiles
- Dado: Dado of Vitrified tiles up to door height

Doors & Window

- Main door: Solid core flush door with laminate finish on outside and paint finish from inside
- Internal door: Solid core flush door with paint finish on both sides
- Window: Anodized aluminium window

CP & Sanitary Fittings

- EWC in toilets and basin from CERA/Jaquar/Hindware /Kohler or equivalent
- All other CP fittings are from CERA/Jaquar/Hindware /Kohler or equivalent

Electrical

- ISI mark concealed FRLS copper wiring with modular switch of Anchor-Panasonic or equivalent make
- Adequate electrical switch and sockets in rooms with AC points in the living room & bedroom
- Points for refrigerator, water purifier, microwave/mixer grinder, exhaust fan in kitchen and points for geyser, exhaust fan along with other electrical points in toilets

Green Initiatives

- Organic waste management
- Water efficient fixtures
- Rainwater harvesting
- Sewage treatment plant
- Ample green space with use of native plants in the landscape
- Recycled water for gardening
- Dual Flushing system
- Low VOC materials
- Use of LED lights in common areas
- Use of SRI tiles to reflect heat from the roof